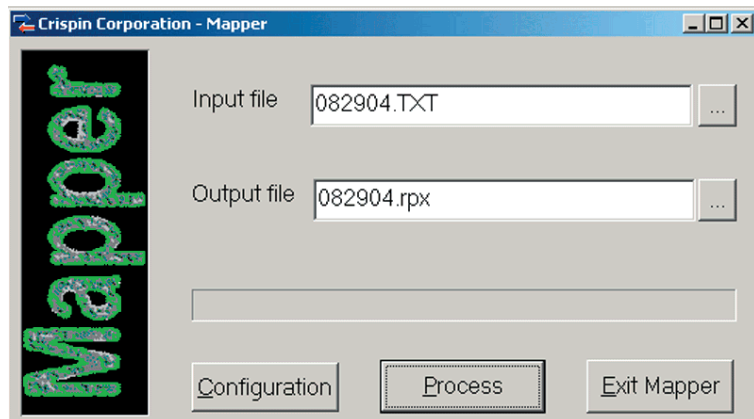




www.crispincorp.com



The role of automation is to take instructions from traffic and precisely direct all of the components to present a flawless performance. Crispin's Mapper application plays a key role in integrating the business functions of Traffic with the technical operations of a television facility.

Mapper executes the transfer of program schedules along with other lists needed for material preparation from traffic to operations while having minimal impact on the workflow of either unit. Crispin's Mapper accomplishes this using powerful rules files and a simple operator interface.

Facility growth and modification causes changes in devices used in the air operation. At Crispin we understand that and we know that technical operations and traffic department personnel must not be burdened with making changes to keep up. Our traffic interface experts can quickly create rules files to enable these changes with no disruption to the operation, and no change to the traffic system.

For a typical system, Mapper will have multiple configurations to accommodate each different program channel, media dub list, satellite record schedule, purge list and any set of instructions that Traffic needs to issue to the operation. Mapper integrates with Crispin's AssetBase media management system to enable our powerful asset management tools including automatic dub lists and automatic purge of material.

In stand-alone form, Mapper is a simple ASCII file converter that has found many utility uses unrelated to interfacing traffic. Combined with Crispin's Recon application and AsRun options, a completely closed loop traffic interface for today's multi-channel operations is created.

Mapper Key Features

- Simple user interface for quick and easy integration of all traffic functions
- Flexible rules files eliminate the need for changes in Traffic
- Creates proper naming and header information to accommodate closed-loop systems
- Automatically creates secondary events for key, voice-over and ATSC mode changes
- Remembers default file locations to streamline repetitive operations
- Integrates with AssetBase media management for automation of dub lists, purge lists, discrepancy reports and creation of new asset records
- General ASCII file conversion for a multitude of data translation requirements
- Interfaces to any traffic system format
- Allow use of non-standard systems and software for creating broadcast schedules