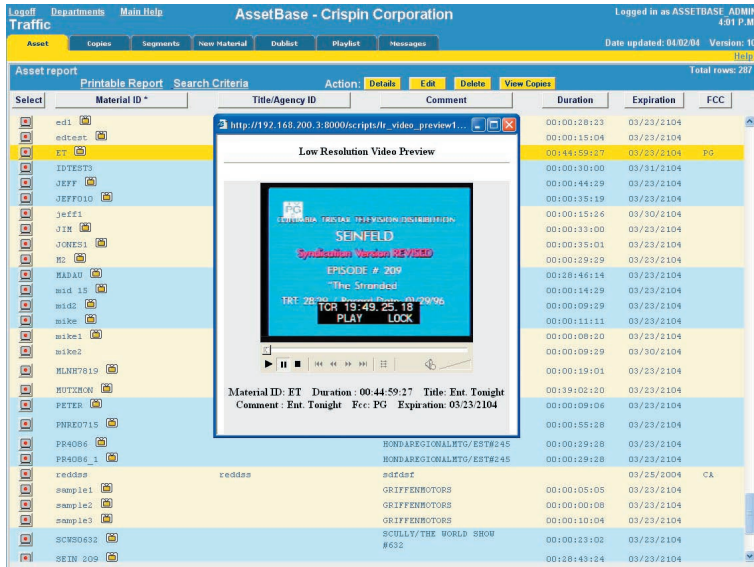




www.crispincorp.com



LoRez, a low-resolution content encoding server, generates low-resolution proxy clips from video assets such as commercials and programs. In addition to proxy clips, LoRez has the unique ability to capture and store "Slates" from a variety of sources including catch servers. This additional verification tool provides master control operators with another opportunity to verify video assets in the timeline. Authorized users can search for and view proxy clips and slates anywhere on the network via AssetBase, Crispin's database application.

With LoRez, users no longer have to review and segment clips on their play-to-air server. This valuable resource opens up port space and reduces activity on the mission critical server.

LoRez Key Features

- Compatible with popular media players and RapidPrep, Crispin's frame-accurate segmenting application
- Media prep and segmenting with proxy clips from the desktop without using a video server port
- Shadows Dubber media ingest to create proxies of commercials, promos, and other interstitials
- LoRez is supplied with two capture cards, which can be used for simultaneous records
- LoRez encoders are controlled by any Crispin application that controls video servers
- Allows the creation of a JPEG image of the slate or any frame for each spot dubbed
- Storage capacity of approximately 500 hours of proxy material (as supplied)
- Storage capacity may be increased through an external central proxy clip repository
- LoRez viewing fully integrated with AssetBase web-enabled media management
- Slate viewing integrated with RapidPlayX for spot verification by master control
- Frame accurate proxy viewing, at a one quarter size full screen, or 320x240
- Simultaneously record any satellite feed in LoRez with RecordScheduler
- Any PC on the network may view proxies with Windows Media Player
- Space saving two rack unit Linux based encoder server platform
- View proxy clips and slates through a Web-based interface
- Schedule and record air-checks for program logging
- Easily expandable - add encoders as needed
- Video is in MPEG2 format

Automation just got easier.