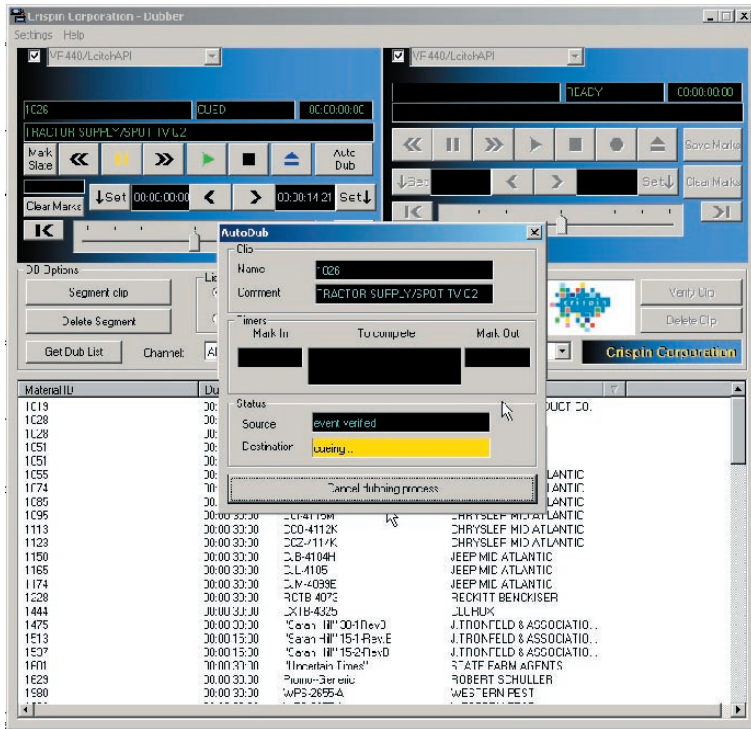




www.crispincorp.com



Dubber is Crispin's acquisition software for dubbing video assets for play-to-air requirements. It controls a video server I/O port and a source device (VTR, catch server) to execute frame accurate transfers of assets to the video server. Dubber works with AssetBase, Crispin's database application, to automatically generate dub lists. Dub lists appear in the Dubber list window. Simply select the clip record to transfer the data and prepare a dub session. Dubber may also be used to create clips on the fly from live or uncontrolled sources.

The essential tool for dubbing new material and preparing spots and programs for play-to-air, Dubber can be used to segment tapes or clips and write segment information to the database. Segment information is stored within Assetbase and later retrieved by RapidPlayX for play-to-air requirements. Dubber works with BVW protocol machines and multiple video/catch servers including FastChannel, DG Systems, Pathfire and Media DVX.

Dubber provides all of the tools needed to speed and simplify the acquisition and preparation of material for fully automated playback to air.

Dubber Key Features

- Automatic dub list generation. Select a clip from the integrated list to enter all metadata and ready the dub session. No retyping of data is needed (requires AssetBase.)
- Catch server management queries the contents of "catch" servers and transfers the information to traffic for assignment to the dub list. Crispin offers direct control of catch servers (FastChannel, DG Systems, Pathfire and Media DVX) for dubbing to the on-air server.
- Segment programming and write the data to AssetBase for automatic play-to-air by RapidPlayX
- Convenient one-button clip review system enables fast checks of start and end of dubbed clips
- One-button copy-to-mirror function allows server-to-server copy via TCP-IP
- Flexible jog/shuttle GUI configuration for source VTR and video server
- Slate capture/display and proxy clip creation when used with LoRez
- Allows deletion of server assets for simple media management
- Direct connection to server I/O ports and source devices
- Hardware jog/shuttle control panel available (optional)
- Automatically import traffic generated dub lists
- User bit functionality for legacy tape operations

Automation just got easier.