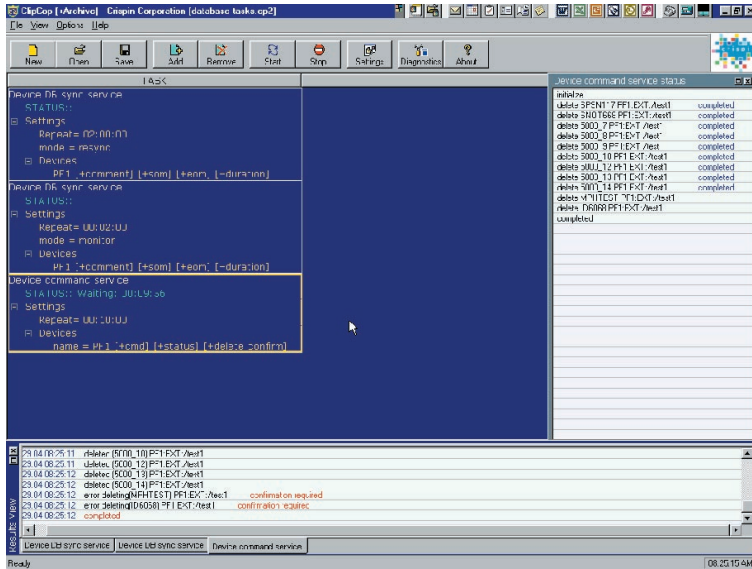




www.crispincorp.com



File transfers between video servers and archive systems are accomplished automatically or on request by this task-based video server manager. ClipCopX integrates with AssetBase, Crispin's database application, for fully automated copy, transfer and deletion processes. ClipCopX reduces storage on backup video servers through video server caching (improves space management) and also provides mirror management of redundant servers.

An essential part of a fully automated system, ClipCopX synchronizes video and catch server content with AssetBase.

ClipCopX Key Features

- One-time or recurring tasks for file transfers and deletions with video servers
- Option to automatically delete clips or hold deletions in a list for approval
- Executes tasks for AssetBase or independently carries out tasks including:
 - Mirror manager*
 - Cache manager for backup to smaller video server*
 - Delete clips and copies based on playlist and date*
 - Copy all clips contained in a given folder to a different server*
 - Cache clips from primary video server to backup video server using a look ahead time and playlist as parameters*
 - Copy all clips contained in RapidPlayX playlist to a second video server*
 - Delete all clips contained in a folder*
 - Delete all clips older than a given date*
 - Delete all clips not needed by a given playlist*
- Auto-synchronization of all video server content to AssetBase
- Performs background maintenance functions
- Executes archive and restore requests
- Mirroring control of server contents
- Deletion of clips based on kill dates
- Auto restore from archive system
- Flexible multiple task assignment
- Playlist caching by time of day
- Diagnostic logging per task

Automation just got easier.